

Foundation Stage 1 Newsletter



Dear Families,

Welcome to Foundation Stage 1! We are very excited to welcome your children to Nursery. We as practitioners feel strongly about always having the children's emotional wellbeing at the heart of everything we do! This in turn will develop enriching learning experiences in the early years and create meaningful learning for your children.

All the children have settled in well and are continuing to build relationships with other children and staff. It's lovely to see such happy and engaged children at nursery this early on in the first term!

Meet the team



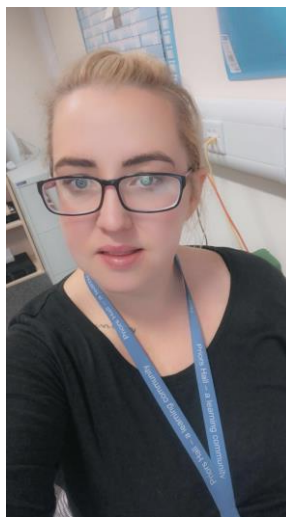
Sam

The Owl Group
Thursday & Friday



Karla

The Owl Group
Monday- Wednesday



Karla

The Gruffalos Group



Carly

The very hungry caterpillars group.

Safeguarding is everyone's responsibility – if you are concerned about the welfare of a child, please contact one of our school DSLs, Ben Lynch, Tess McQuade, Alex Crawford or Jenna Smith.

When planning for your child we use their interests to plan the areas of our nursery environment. Children are naturally curious about the world around them, by allowing children to explore you encourage them to be life-long learners. We would love to hear about things you are doing at home, whether it's a walk in the park noticing differences in the environment or counting their jumps on the trampoline. We could use this information at nursery to plan activities. Please use dojo to send pictures and information to your child's key worker.

Reminders

- As we have outdoor play every day, please ensure your child has appropriate clothing for the weather, i.e.- Coat/ puddle suit, wellies, hat & gloves. Can you also ensure these are named so if they get lost we can return them promptly!
- We are a nut free school, please ensure nothing containing or "may contain" nuts is sent in your child's lunch box. We also ask that children's grapes are cut length ways to reduce the risk of choking.
- If your child stays for lunch we would kindly like to remind you to book and pay for this using the school comms app. Lunchtime care is not included in the 30 hour free child care and is £5 it is named "lunch club" on the app.

Key dates

Individual & sibling photographs – 19th October 2020

Wear it pink for breast cancer (£1 mufti) – 22nd October 2020 – proceeds to Breast Cancer Now research.

Children in Need 2020 (mufti £1) – 13th November 2020 – proceeds to children in need.

Magician visits (£1.50 parental contribution) – 17th December 2020 (letter to follow)

Autumn term 1: Thursday 3rd September – Thursday 22nd October

Autumn term 2: Monday 2nd November – Friday 18th December

General information

Water

It is crucial that every child arrives at nursery with fresh water in a named/labelled bottle.

Class Dojo

We will use Class dojo to communicate with you and to share the children's learning. Please let us know if you still need to connect on this service and we will be able to give you a code.

Pupil Premium

The COVID-19 pandemic has affected many families. You may be eligible for Pupil Premium, please check at <https://www.northamptonshire.gov.uk/councilservices/children-families-education/schools-and-education/Pages/pupil-premium.aspx>

Snack

As always we would welcome a weekly voluntary donation of £1 towards our snack. This can be paid in cash or via the school comms app.

Raffle donations

We are organising a Christmas raffle to raise money for more equipment across our early year's provisions. If you or someone you know who would be willing to donate a raffle prize please let Karla know. A letter will follow with more details.